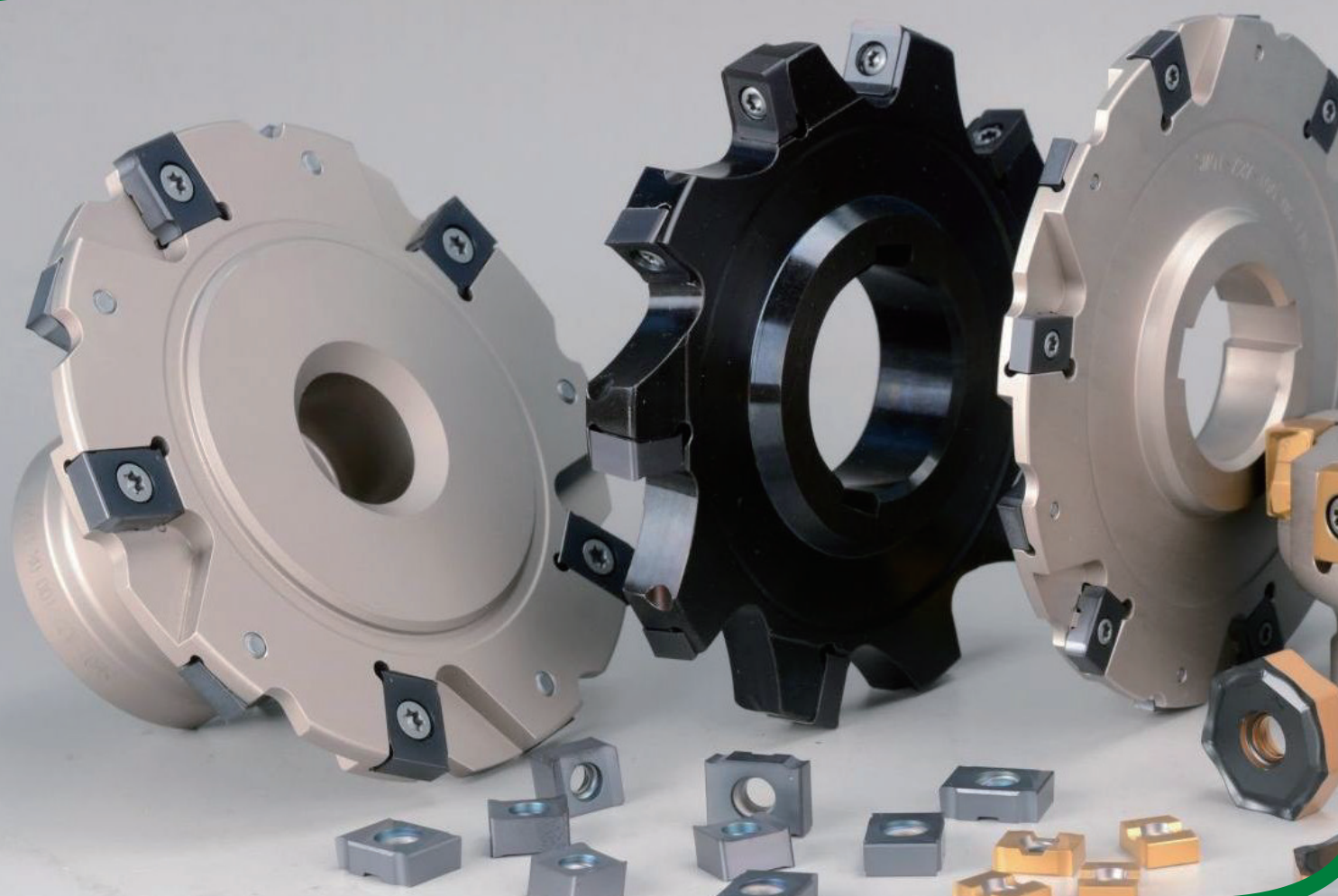


股票代码: 688308

OKE 欧科亿

MILL TOOL

➤ **SM系列槽铣刀具**
SM Series slot milling tool

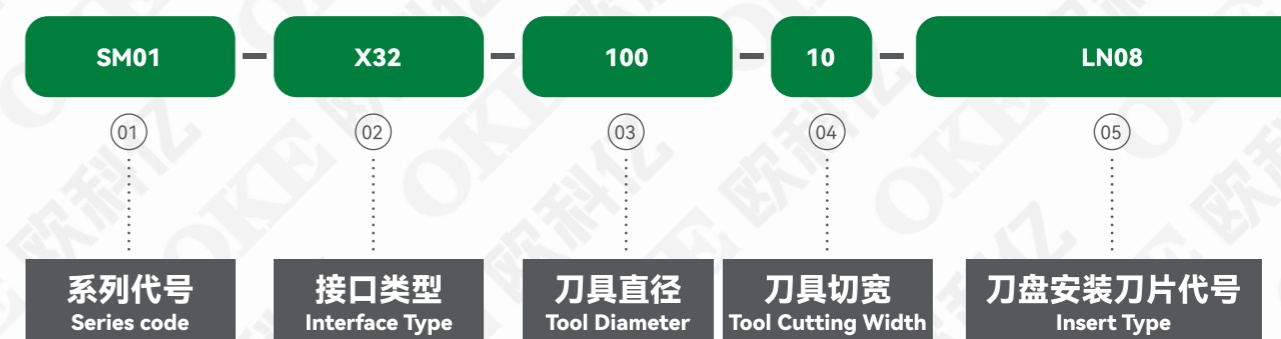


www.oke-carbide.com

SM 系列槽铣刀具 SM series slot milling tool

01 SM 系列槽铣刀具命名规则

SM Series Slot Milling Tools Naming Rules



SM01 系列 (切削宽度 4-11mm)

SM01 Series (Cutting Width: 4-11mm)



全系刀片精磨，搭配高精度钢制品
可实现稳定高效切削

Full series insert are fine ground, and paired with high-precision cutters, enabling stable and efficient cutting

SM02 系列 (切削宽度 10-22mm)

SM02 Series (Cutting Width: 10-22 mm)



刀片双面四刃，经济性好。
独特的槽型与刃口设计，
刀片可适应不同需求工况。

Double-sided with four cutting edges insert, provides excellent cost-effectiveness
The unique chip-breaker and cutting edge design allows the insert to adapt to various cutting conditions

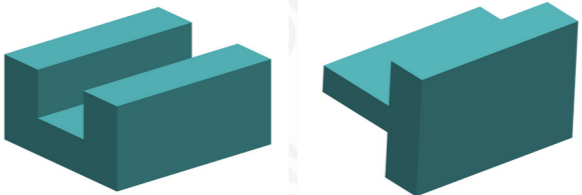

02 SM 系列槽铣刀具使用介绍
Introduction: SM Series Slot Milling Tools

■ SM01 系列 (切削宽度 4-11mm) SM01 Series (Cutting Width: 4-11mm)

<p>加工方式 Processing method</p>	<p>用于锯切和铣槽 Suitable for Sawing and Slot Milling</p>
	<p>刀片采用立装安装形式 Standard diameter range: 80-160 mm 每个刀片有 2 左 + 2 右 4 个切削刃 The inserts use a vertical installation method Standard diameter range: 80-160 mm Each insert has 2 left + 2 right cutting edges (a total of 4 cutting edges)</p>
<p>刀盘样式 Cutter type</p>	<p>刀片型号 Insert Type</p>
 <p>碟式 Disc Ø 100-160 mm</p> <p>接柄式 With Shank Ø 80-160 mm</p>	<p>LNHT024-R* LNHT029-R* LNHT034-R* LNHT039-R* LNHT044-R* LNHT049-R* LNHT054-R* LNHT059-R*</p> <p>切削刃形式 Cutting Edge</p> <p>刀尖圆角 Optional Corner Radius 0.4-2 mm 常备圆角 Standard Radius R 0.4</p>



■ SM02 系列 (切削宽度 10-22mm) SM02 Series (Cutting Width: 10-22 mm)

<p>加工方式 Processing method</p>	<p>用于三面刃槽铣和两面刃侧铣 Suitable for three-edge slot milling and two-edge side milling</p>
	<p>标准规格直径 80-160 mm 刀片分压制 LNET* 系列和磨制 LNHT* 系列 每个刀片有 2 左 + 2 右 4 个切削刃 Standard diameter range: 80-160 mm, Inserts are available in LNET series and fine ground LNHT* series, Each insert has 2 left + 2 right cutting edges (a total of 4 cutting edges).</p>
<p>刀盘样式 Cutter type</p>	<p>刀片型号 Insert Type</p>
 <p>碟式 Disc Ø 100-160 mm</p> <p>接柄式 With Shank Ø 80-160 mm</p>	<p>LNHT* 系列磨制刀片为首选 Ground LNHT* series are the first choice 常备圆角 Standard Radius R 0.8 LNHT08-R* (刀尖圆角 Optional Corner Radius 0.4, 0.8) LNHT10-R* (刀尖圆角 Optional Corner Radius 0.8, 1.2, 1.6, 2) LNHT12-R* (刀尖圆角 Optional Corner Radius 0.8, 1.2, 1.6, 2)</p>



03 SM 系列槽铣刀具应用案例
Cases of SM Series Slot Milling tools

加工案例一 Application case 1

刀具型号 Tool Type	SM02-X40-160-12-LN10 LNHT12-R08/OP1325	
零件名称 Workpiece	车门 / 车体零部件 Car door / Car body parts	
加工材料 Workpiece Materials	Q335B	
切削速度 Cutting Speed	376.8m/min	
进给速度 Feed Rate	149mm/min (0.033mm/z)	
切削方式 Cutting Method	面铣 Face Milling	
冷却方式 Cooling Method	液冷 Fluid Cooling	
切削效果 Cutting Performance	寿命相当，表面质量满足客户需求 Tool life is excellent, also it give wonderful surface quality.	

加工案例三 Application case 3

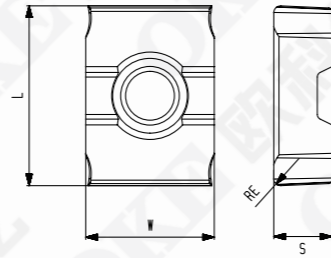
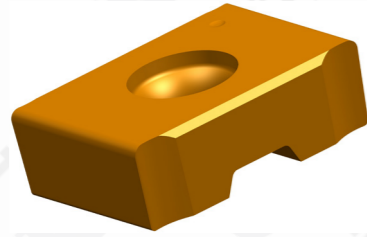
刀具型号 Tool Type	SM02-X40-125-18-LN12 LNET12-R08/OC3220	
零件名称 Workpiece	刹车盘 Brake Disc	
加工材料 Workpiece Materials	HT250	
切削速度 Cutting Speed	157m/min	
进给速度 Feed Rate	32mm/min (0.013mm/z)	
切削深度 Cutting Depth	0.1-3.3mm	
切削方式 Cutting Method	槽铣 Slot Milling	
冷却方式 Cooling Method	干切 Dry Cutting	
切削效果 Cutting Performance	寿命与竞品相当，达到客户换刀要求 The insert life matches that of the competitors, meeting the customer's insert replacement requirements.	

加工案例二 Application case 2

刀具型号 Tool Type	SM02-X40-350-14-LN12-FB LNET12-R08/OP1325	
零件名称 Workpiece	机械设备配件 Mechanical Equipment Parts	
加工材料 Workpiece Materials	Mn 钢 / 球铁 / 焊接件 Manganese Steel/Ductile Iron/ Welded Parts	
切削速度 Cutting Speed	329.7m/min	
进给速度 Feed Rate	101mm/min (0.048mm/z)	
切削方式 Cutting Method	面铣 / 槽铣 Face Milling / Slot Milling	
冷却方式 Cooling Method	干切 Dry Cutting	
切削效果 Cutting Performance	铣侧面与竞品持平，铣全槽寿命约为竞品 2 倍 The tool life for side milling matches competitor's tool life, while the tool life for deep slot milling is approximately doubled compare to competitor's tool life.	

04 SM01 系列槽铣刀具规格参数介绍
Introduction: parameters of SM01 series slot milling tools

■ 刀片系列: LNHT □□□ -R04 Insert Series: LNHT □□□ -R04



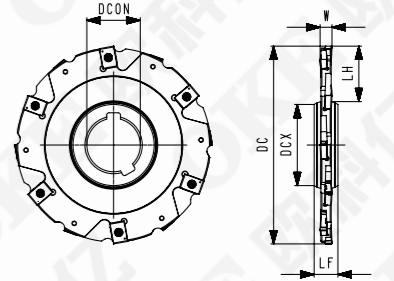
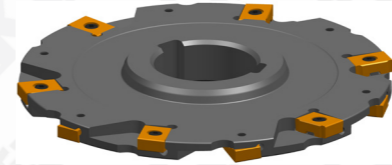
= 稳定工况 ≈ 一般工况 # 恶劣
= Stable cutting condition ≈ Normal cutting condition # Bad working condition

工件材料 Workpiece material	P	钢 Steel		≈	=	≈	≈	≈	≈	#		
	M	不锈钢 Stainless steel										
刀片型号 Insert Type	K	铸铁 Cast iron		≈	=	≈	≈	≈	≈	#	≈	
	N	有色金属 Nonferrous metal										
	S	高温合金 High-Temperature Alloy										
	H	高硬材料 High-hardness Material										
刀片基本尺寸 Basic Dimensions	刀片基本尺寸 Basic Dimensions				CVD		PVD					无涂层 Uncoating
	L	W	S	RE	SC7220	SP6202	SP9315	SP9325	SP9030	SP9630	SP9340	
LNHT024-R04	10.5	7.5	2.4	0.4				●				○
LNHT029-R04	10.5	7.5	2.9	0.4				●				○
LNHT034-R04	10.5	7.5	3.4	0.4				●				○
LNHT039-R04	13.5	10	3.9	0.4				●				○
LNHT044-R04	13.5	10	4.4	0.4				●				○
LNHT054-R04	13.5	10	5.4	0.4				●				○
LNHT059-R04	15.5	12	5.9	0.4				●				○

● 常备库存 In stock ○ 按单生产 Made to Order

04 SM01 系列槽铣刀具规格参数介绍
Introduction: parameters of SM01 series slot milling tools

■ 钢制品系列: 碟式 Cutter Series: Disc type



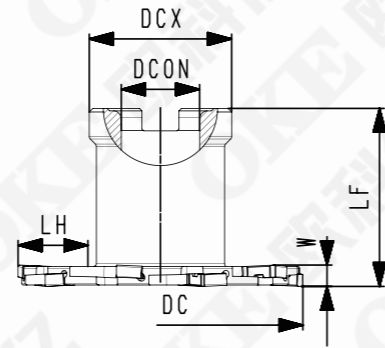
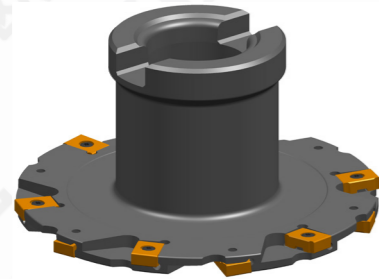
刀具型号 Tool Type	库存 Stock	齿数 Number of teeth	刀具基本尺寸 Basic Dimension						接口 Interface type	适用刀片 Inserts	螺钉 Screw	扳手 Wrench
			DC	DCX	DCON	LF	LH	W				
SM01-X27-100-04-LN024	●	12	100	41	27	12	27	4	X			
SM01-X40-125-04-LN024	○	14	125	55	40	12	32	4	X	LNHT024-R04	SA02503X	T08P
SM01-X40-160-04-LN024	○	18	160	55	40	12	50	4	X			
SM01-X27-100-05-LN029	●	12	100	41	27	12	27	5	X			
SM01-X40-125-05-LN029	○	14	125	55	40	12	32	5	X	LNHT029-R04	SA02504X	T08P
SM01-X40-160-05-LN029	○	18	160	55	40	12	50	5	X			
SM01-X27-100-06-LN034	●	12	100	41	27	12	27	6	X			
SM01-X40-125-06-LN034	○	14	125	55	40	12	32	6	X	LNHT034-R04	SA02505X	T08P
SM01-X40-160-06-LN034	○	18	160	55	40	12	50	6	X			
SM01-X27-100-07-LN039	●	10	100	41	27	12	27	7	X			
SM01-X40-125-07-LN039	○	12	125	55	40	12	32	7	X	LNHT039-R04	SA0406X	T15P
SM01-X40-160-07-LN039	○	16	160	55	40	12	50	7	X			
SM01-X27-100-08-LN044	●	10	100	41	27	12	27	8	X			
SM01-X40-125-08-LN044	○	12	125	55	40	12	32	8	X	LNHT044-R04	SA0406X	T15P
SM01-X40-160-08-LN044	○	16	160	55	40	12	50	8	X			
SM01-X27-100-10-LN054	●	10	100	41	27	12	27	10	X			
SM01-X40-125-10-LN054	●	12	125	55	40	12	32	10	X	LNHT054-R04	SA0407X	T15P
SM01-X40-160-10-LN054	●	16	160	55	40	12	50	10	X			
SM01-X27-100-11-LN059	●	8	100	41	27	13	27	11	X			
SM01-X40-125-11-LN059	●	10	125	55	40	13	32	11	X	LNHT054-R04	SA0509	T20P
SM01-X40-160-11-LN059	●	14	160	55	40	13	50	11	X			

● 常备库存 In stock ○ 按单生产 Made to Order

04 SM01 系列槽铣刀具规格参数介绍

Introduction: parameters of SM01 series slot milling tools

■ 钢制品系列: 接柄式 Cutter Series: With Shank



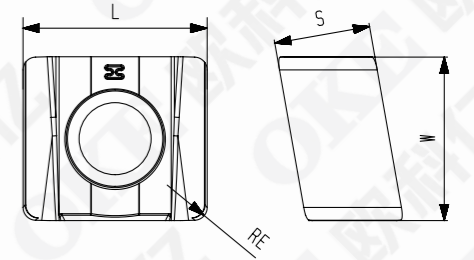
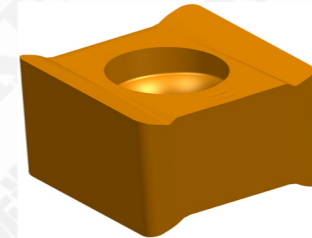
刀具型号 Tool Type	库存 Stock	齿数 Number of teeth	刀具基本尺寸 Basic Dimension						接口 Interface type	适用刀片 Inserts	螺钉 Screw	扳手 Wrench
			DC	DCX	DCON	LF	LH	W				
SM01-A22-80-04-LN024	○	10	80	40	22	50	20	4	A	LNHT024-R04	SA02503X	T08P
SM01-A27-100-04-LN024	●	12	100	48	27	50	26	4	A			
SM01-A22-80-05-LN029	○	10	80	40	22	50	20	5	A	LNHT029-R04	SA02504X	T08P
SM01-A27-100-05-LN029	○	12	100	48	27	50	26	5	A			
SM01-A22-80-06-LN034	○	10	80	40	22	50	20	6	A			
SM01-A27-100-06-LN034	●	12	100	48	27	50	26	6	A	LNHT034-R04	SA02505X	T08P
SM01-B40-125-06-LN034	○	14	125	70	40	50	25	6	B			
SM01-B40-160-06-LN034	○	18	160	70	40	50	42	6	B			
SM01-A22-80-07-LN039	○	8	80	40	22	50	20	7	A			
SM01-A27-100-07-LN039	●	10	100	48	27	50	26	7	A	LNHT039-R04	SA0406X	T15P
SM01-B40-125-07-LN039	○	12	125	70	40	50	25	7	B			
SM01-B40-160-07-LN039	○	16	160	70	40	50	42	7	B			
SM01-A22-80-08-LN044	○	8	80	40	22	50	20	8	A			
SM01-A27-100-08-LN044	●	10	100	48	27	50	26	8	A	LNHT044-R04	SA0406X	T15P
SM01-B40-125-08-LN044	○	12	125	70	40	50	25	8	B			
SM01-B40-160-08-LN044	○	16	160	70	40	50	42	8	B			
SM01-A27-100-10-LN054	●	10	100	48	27	50	26	10	A			
SM01-B40-125-10-LN054	●	12	125	70	40	50	25	10	B	LNHT054-R04	SA0407X	T15P
SM01-B40-160-10-LN054	●	16	160	70	40	50	42	10	B			
SM01-A27-100-11-LN059	●	8	100	48	27	50	26	11	A			
SM01-B40-125-11-LN059	●	10	125	70	40	50	25	11	B	LNHT059-R04	SA0509	T20P
SM01-B40-160-11-LN059	●	14	160	70	40	50	42	11	B			

● 常备库存 In stock ○ 按单生产 Made to Order

05 SM02 系列槽铣刀具规格参数介绍

Introduction: parameters of SM02 series slot milling tools

■ 刀片系列: LNHT □□ -R □□ Insert Series: LNHT □□□ -R □□



= 稳定工况 ≈ 一般工况 # 恶劣
= Stable cutting condition ≈ Normal cutting condition # Bad working condition

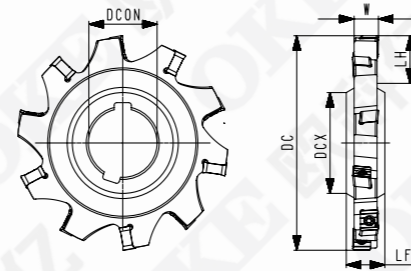
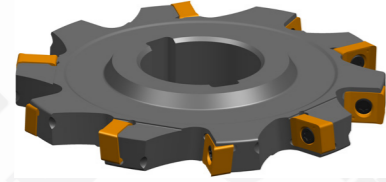
工件材料 Workpiece material	P 钢 Steel	M 不锈钢 Stainless steel	K 铸铁 Cast iron	N 有色金属 Nonferrous metal	S 高温合金 High temperature alloy	H 高硬材料 High hardness material	刀片基本尺寸 Basic Dimensions				CVD		PVD				无涂层 Uncoating	
							L	W	S	RE	SC4025	SP6202	SP9315	SP9325	SP9030	SP9630		SP9340
LNHT08-R08							10.5	8.2	5.3	0.8							●	
LNHT08-R04							10.5	8.2	5.3	0.4							●	
LNHT08-R08							10.5	8.2	5.3	0.8	○						●	○
LNHT10-R08							11.5	10.2	6.0	0.8							●	
LNHT10-R08							11.5	10.2	6.0	0.8	○						●	○
LNHT10-R1.2							11.5	10.2	6.0	1.2							●	
LNHT10-R1.6							11.5	10.2	6.0	1.6							●	
LNHT10-R2							11.5	10.2	6.0	2							●	
LNHT12-R08							11.5	12.2	6.0	0.8	○						●	○
LNHT12-R08							11.5	12.2	6.0	0.8							●	
LNHT12-R1.2							11.5	12.2	6.0	1.2							●	
LNHT12-R1.6							11.5	12.2	6.0	1.6							●	
LNHT12-R2							11.5	12.2	6.0	2							●	

● 常备库存 In stock ○ 按单生产 Made to Order

05 SM02 系列槽铣刀具规格参数介绍

Introduction: parameters of SM02 series slot milling tools

■ 钢制品系列：碟式 Cutter Series:Disc Type



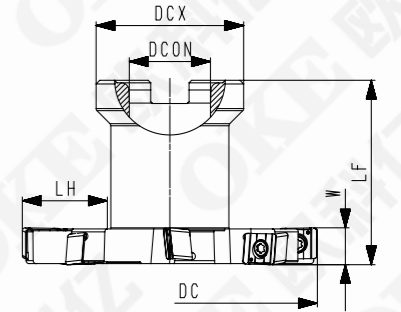
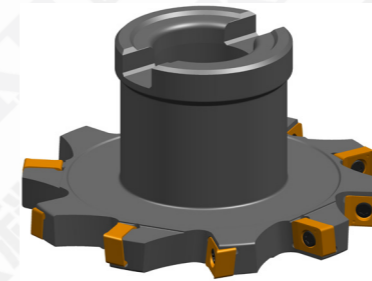
刀具型号 Tool Type	库存 Stock	齿数 Number of teeth	刀具基本尺寸 Basic Dimension					接口 Interface type	适用刀片 Applicative insert	螺钉 Screw	扳手 Wrench
			DC	DCX	DCON	LH	W				
SM02-X32-100-10-LN08	●	10	100	47	32	24	10、12、14	X	LNHT08-R08	SA03085	T09P
SM02-X40-125-10-LN08	●	12	125	55	40	33	10、12、14	X			
SM02-X40-160-10-LN08	●	14	160	55	40	50	10、12、14	X			
SM02-X32-100-16-LN10	●	10	100	47	32	24	16、18	X	LNHT10-R08	SA04011	T15P
SM02-X40-125-16-LN10	●	12	125	55	40	33	16、18	X			
SM02-X40-160-16-LN10	●	14	160	55	40	50	16、18	X			
SM02-X32-100-20-LN12	●	10	125	47	32	24	20、22	X	LNHT12-R08	SA04011	T15P
SM02-X40-125-20-LN12	●	12	160	55	40	33	20、22	X			
SM02-X40-160-20-LN12	●	14	200	69	40	50	20、22	X			

● 常备库存 In stock ○ 按单生产 Made to Order

05 SM02 系列槽铣刀具规格参数介绍

Introduction: parameters of SM02 series slot milling tools

■ 钢制品系列：接柄式 Cutter Series:With Shank



刀具型号 Tool Type	库存 Stock	齿数 Number of teeth	刀具基本尺寸 Basic Dimension						接口 Interface type	适用刀片 Applicative insert	螺钉 Screw	扳手 Wrench
			DC	DCX	DCON	LF	LH	W				
SM02-A22-80-10-LN08	●	8	80	40	22	50	24	10、12、14	A	LNHT08-R08	SA03085	T09P
SM02-A27-100-10-LN08	●	10	100	48	27	50	27	10、12、14	A			
SM02-B32-125-10-LN08	●	12	125	58	32	50	34	10、12、14	B			
SM02-B40-160-10-LN08	●	14	160	70	40	50	46	10、12、14	B	LNHT10-R08	SA04011	T15P
SM02-A22-80-16-LN10	●	8	80	40	22	50	24	16、18	A			
SM02-A27-100-16-LN10	●	10	100	48	27	50	27	16、18	A			
SM02-B32-125-16-LN10	●	12	125	58	32	50	34	16、18	B	LNHT12-R08	SA04011	T15P
SM02-B40-160-16-LN10	●	14	160	70	40	50	46	16、18	B			
SM02-A22-80-20-LN12	●	8	80	40	22	50	24	20、22	A			
SM02-A27-100-20-LN12	●	10	100	48	27	50	27	20、22	A	LNHT12-R08	SA04011	T15P
SM02-B32-125-20-LN12	●	12	125	58	32	50	34	20、22	B			
SM02-B40-160-20-LN12	●	14	160	70	40	50	46	20、22	B			

● 常备库存 In stock ○ 按单生产 Made to Order

本宣传册最终解释权归株洲欧科亿数控精密刀具股份有限公司所有
OKE reserves the final interpretation of this booklet NO.OKE202411



株洲欧科亿数控精密刀具股份有限公司
OKE PRECISION CUTTING TOOLS CO., LTD.

注册地址: 湖南省株洲市炎陵县中小企业创业园创业路(PC.412500)
Register Add: Chuangye Rd, Chuangye Park for SMEs, Yanling County, Zhuzhou, Hunan, China.
办公地址: 湖南省株洲市天元区马家河街道金龙社区马家河路588号 (PC.412008)
Working Add: #588, Jinlong Area, Majiahe Rd, Tianyuan District, Zhuzhou, Hunan, China.

国内销售服务电话
Domestic Sales Hotline

0731-2267 3808 (数控) (CNC Cutting Tools)
0731-2267 3988 (锯齿) (Saw Tips)

国际销售服务电话
International Sales Hotline

0086-731-2757 7393