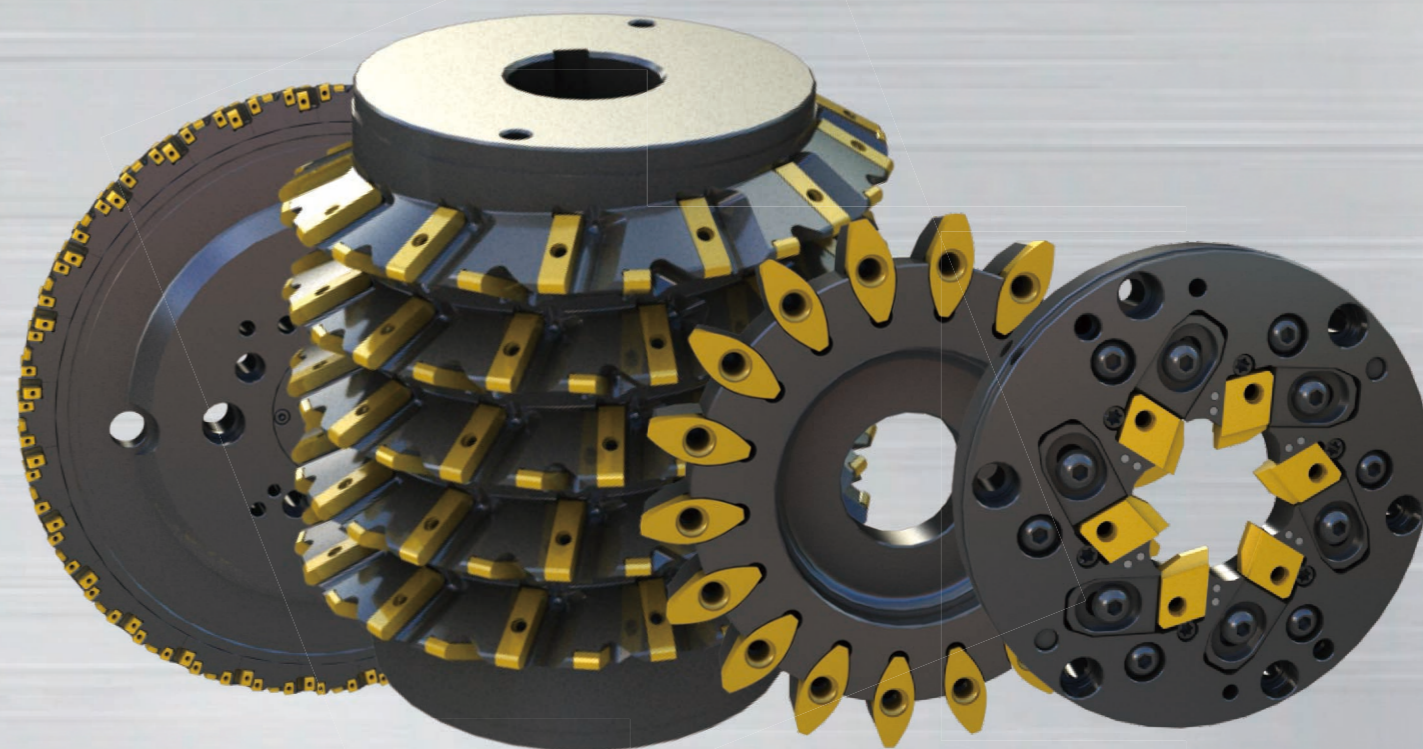


股票代码: 688308

OKE 欧科亿

▶ 可转位齿轮刀具

Indexable Cutting Tools for Gear Machining



株洲欧科亿数控精密刀具股份有限公司
OKE PRECISION CUTTING TOOLS CO., LTD.

注册地址: 湖南省株洲市炎陵县中小企业创业园创业路(PC.412500)
Register Add: Chuangye Rd, Chuangye Park for SMEs, Yanling County, Zhuzhou, Hunan, China.
办公地址: 湖南省株洲市天元区马家河街道金龙社区马家河路588号 (PC.412008)
Working Add: #588, Jinlong Area, Majahe Rd, Tianyuan District, Zhuzhou, Hunan, China.

国内销售服务电话
Domestic Sales Hotline

0731-2267 3808 (数控) (CNC Cutting Tools)
0731-2267 3988 (锯齿) (Saw Tips)

国际销售服务电话
International Sales Hotline

0086-731-2757 7393

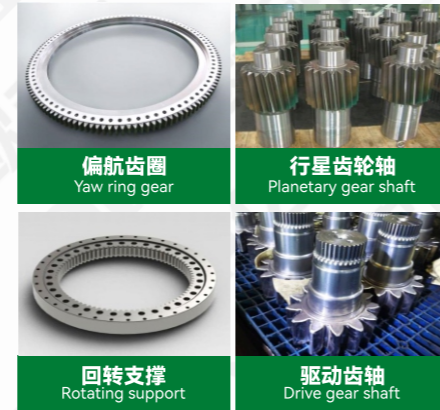
www.oke-carbide.com

可转位齿轮刀具 >>> NEW

INDEXABLE CUTTING TOOLS FOR GEAR MACHINING

齿轮加工方式有很多种，OKE目前开发了铣齿、滚齿、插齿等加工方式的刀具，具体有齿轮铣刀、滚齿刀、插齿刀和蜗杆旋风铣刀，以及相应的刀片，较高的起点使OKE齿轮刀具一进入市场便得到了广大客户的认可，优异的产品精度和刀片性能为您提供高效、经济的加工体验。

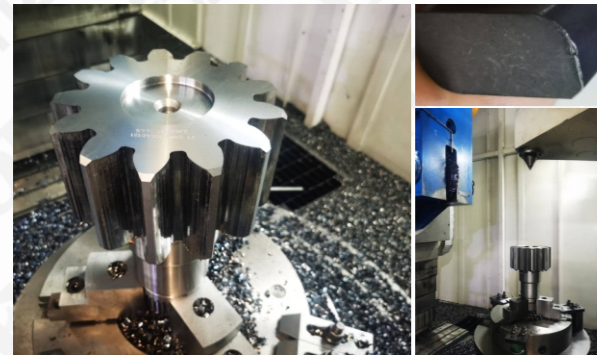
There are many ways to process gears, and(now) OKE has currently developed cutting tools for gear milling, hobbing, and shaping including gear milling cutters, hobbing cutters, shaping cutters, and worm whirling tool, as well as corresponding insert. With a outstanding performance, OKE gear cutting tools have been recognized by customers as soon as they enter the market. Excellent tool accuracy and performance provide an efficient and economical machining experience.



01 齿轮加工刀具目录 Gear machining tool catalog

齿轮粗铣刀 Gear rough milling cutter

为后续精加工去除大部分余量
Roughing process to remove the most of allowance for the next finishing step



齿轮精铣刀 Gear precision milling cutter

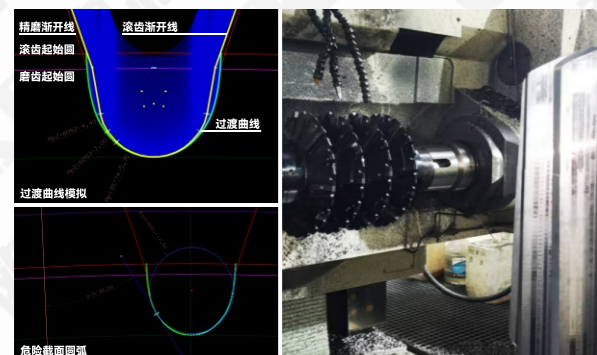
直接将齿轮加工到位，最高精度7级
One cut finishing, able to achieve maximum IT7 accuracy class



磨前滚齿刀 Pre grinding gear hobbing cutter

变模数设计
齿根多圆弧过渡曲线设计模拟
满足客户的最小渐开线起始圆和危险截面圆角要求
最高精度等级9级

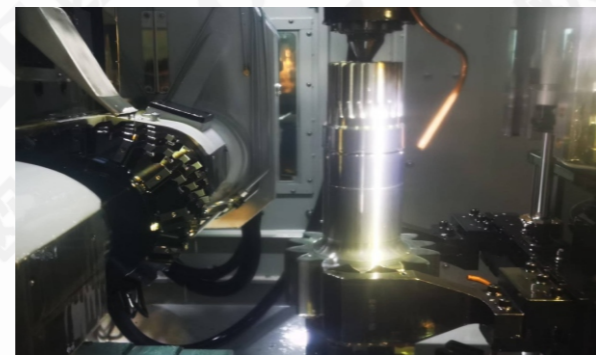
Variable modulus design
Design and simulation of multi arc transition curve for tooth root
Meet the customer's minimum involute starting circle and hazardous section arc requirement
maximum IT9 accuracy class



齿轮精滚刀 Gear precision rolling cutter

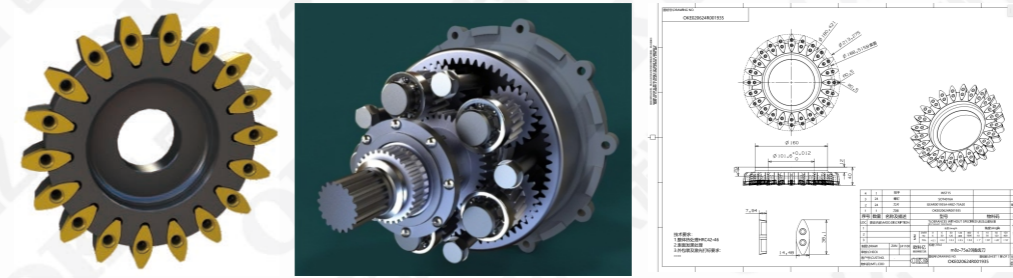
变模数设计
齿根多圆弧过渡曲线设计模拟
满足客户的最小渐开线起始圆和危险截面圆角要求
最高精度等级7级

Variable modulus design
Design and simulation of multi arc transition curve for tooth root
Meet the customer's minimum involute starting circle and hazardous section arc requirement
maximum IT7 accuracy class



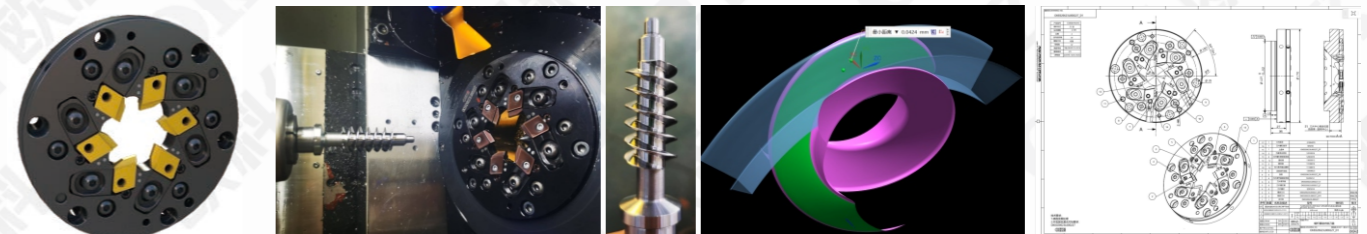
高速可转位插齿刀 High speed indexable gear shaping cutter

高线速度提高加工效率，高耐用度减少换刀时间
High Vc speed improves processing efficiency, high durability reduces tool change time



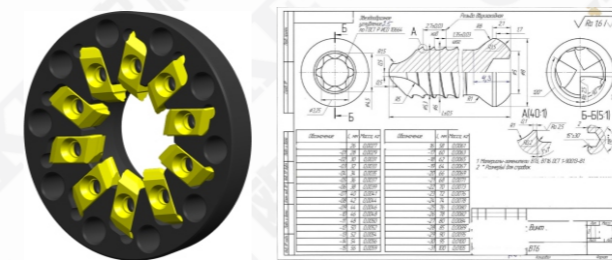
蜗杆旋风铣刀 worm whirling tool

最小齿面留量0.03mm，大幅减少磨削时间；方便调节的结构，大大减少调刀时间
Minimum flank surface allowance is 0.03mm, significantly reduce grinding time. Convenient adjustment mechanism, greatly reducing the tool adjustment time.



种植牙旋风铣刀 Worm whirling tool for dental implant screw

基于蜗杆型线处理能力，可以实现种植牙螺纹刀具设计，高精度保证加工质量。
Based on the machining capability of worm whirling tool, it is able to achieve the design of threading tool for dental implant screw with high precision and high machining quality.



02 齿轮加工主推牌号 OP1320 Recommended grade for gear machining: OP1320

高Co含量的硬质合金基体，具有高的刃口强度，采用多层AlTiN涂层，较传统AlTiN涂层硬度提升，多层结构有效抑制裂纹的扩展，提高涂层的抗崩损性能。结合表面高Al含量AlTiN，保证涂层的抗氧化性。

High Co content and fine WC grain substrate, gives wonderful cutting edge strength, adopting new multiple layer AlTiN coating provides higher hardness compare to the traditional AlTiN coating, also multiple coating layer structure effectively suppresses the extension of crack, which improves the impact resistance. Combining high aluminum content surface AlTiN coating ensures the oxidation resistance.

~93 N			残余应力 Residual stress	-3.2 GPa
AlTiN			硬度 Hardness	35±0.6GPa
AlTiN/TiAlN			弹性模量 Elastic modulus	524±16GPa
AlTiN				